



Positive Flow Indicator

Designed for the protection of hydraulic and pneumatic systems, the Positive Flow Indicator will tell the operator at a glance the current condition of the equipment involved.

Panel mounted or installed in-line in any number of applications, flow of any magnitude from no-flow to full-flow is indicated.

The device functions on a differential pressure principle with a number of calculated orifices to control movement of the color coded indicator pin.

Simply push to reset. This automatically equalizes differential pressure. The indicator is not affected by atmospheric pressure.

Components are fabricated from anodized aluminum. This allows use in most environments including sour gas areas.

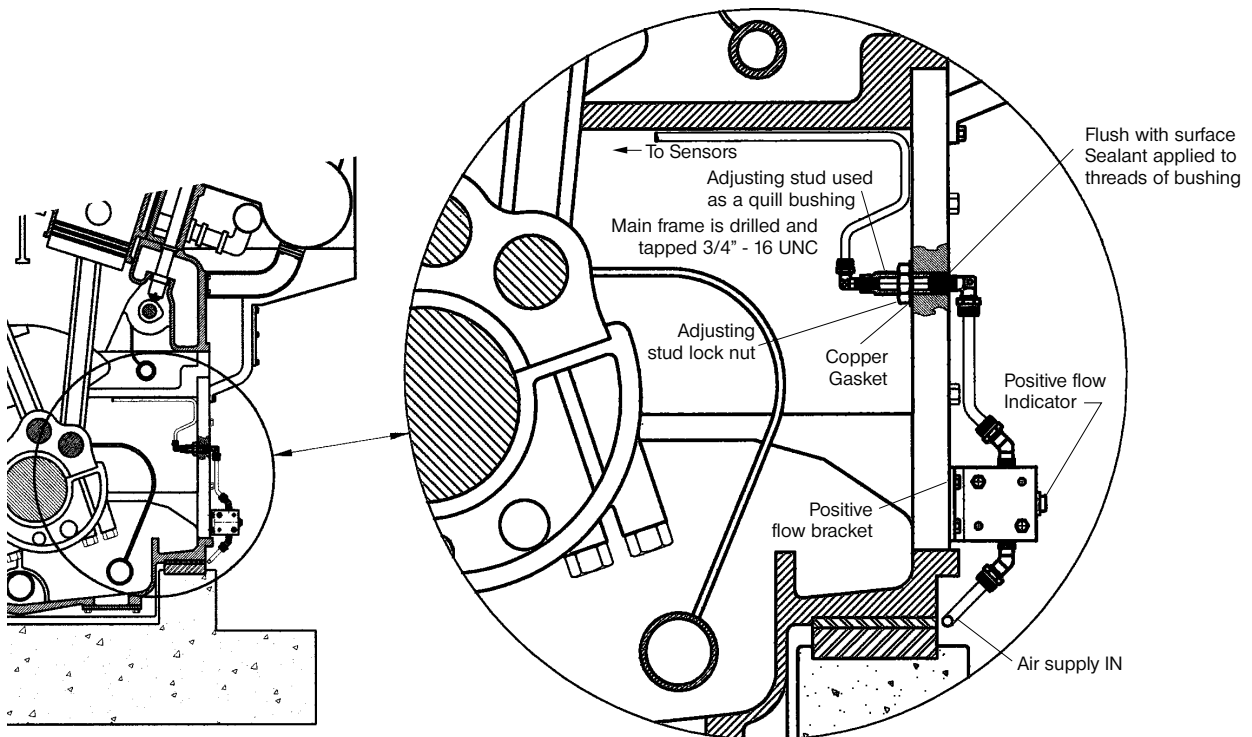
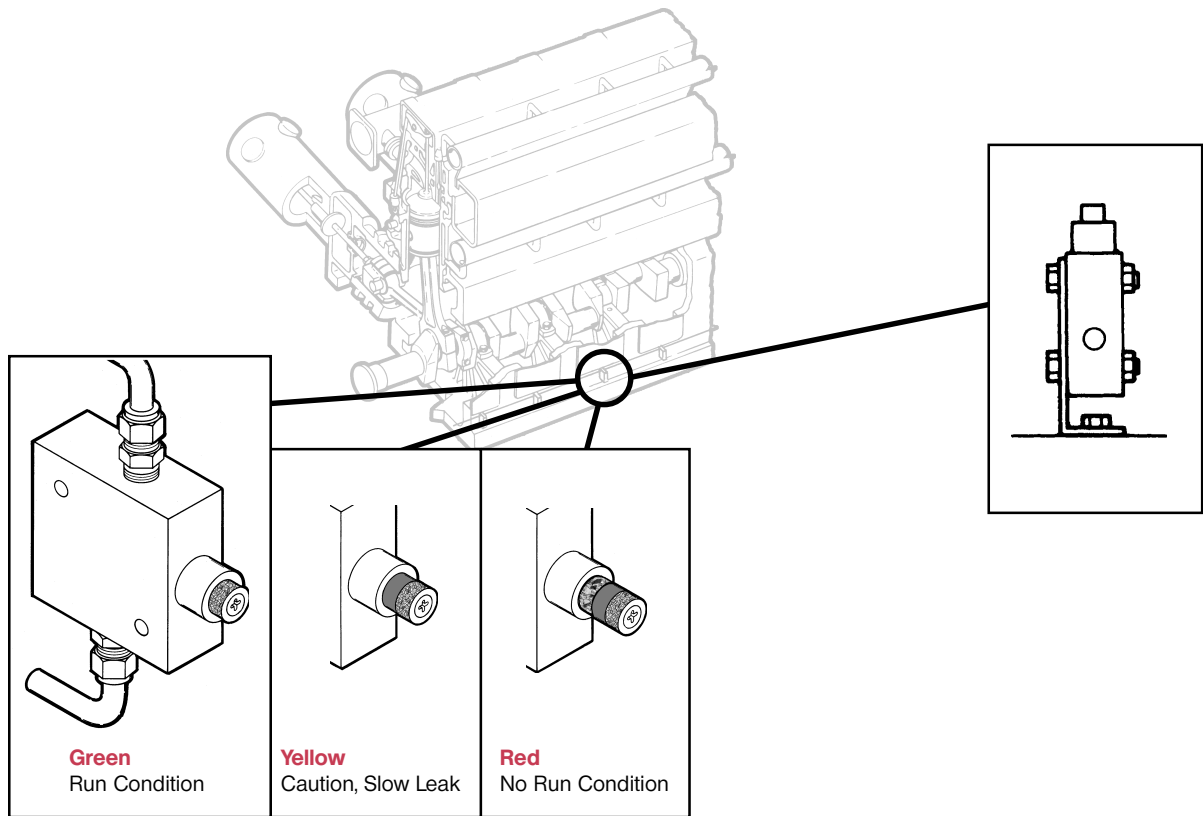
Application

- Instant visual indication of operating condition on temperature sensors and wear indicators.
- Also used to show the stage in which a sequence of operations has progressed, from the smallest leak to a full flow.

Ordering Information

Part Number #340101

In ordering base unit, specify quantity and whether you plan to mount on surface or panel.



Typical Positive Flow Indicator Installation