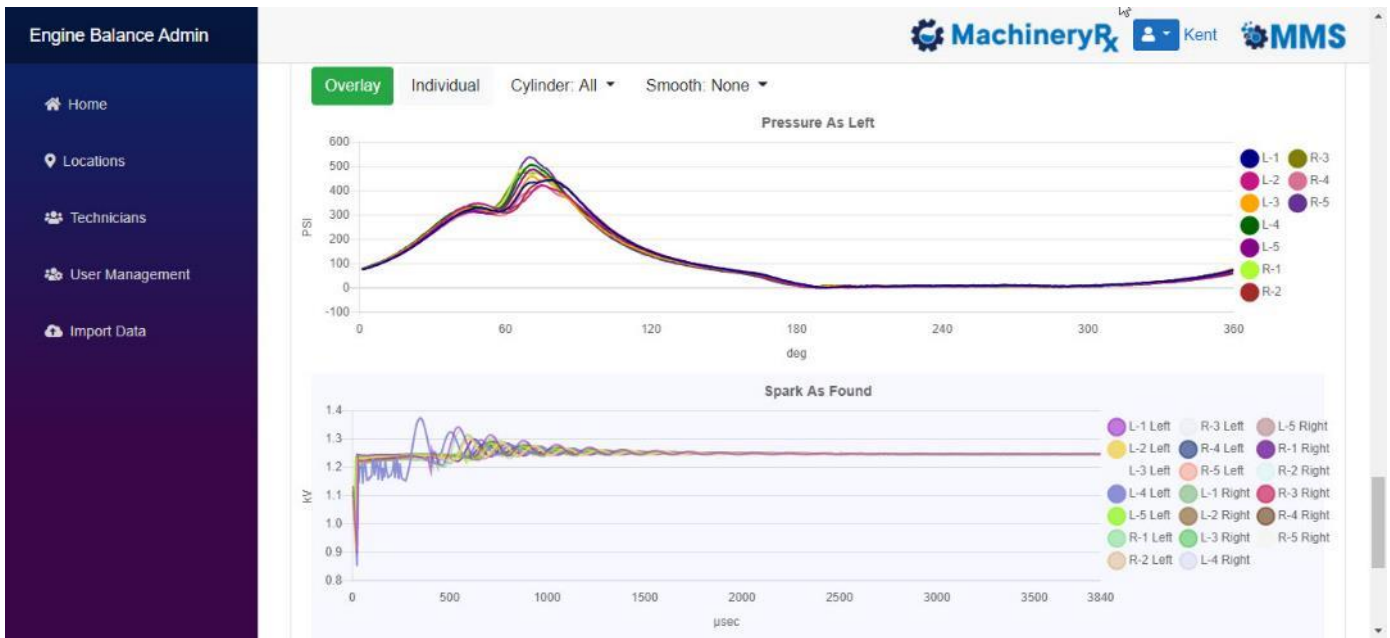




# MachineryRx™



MachineryRx™ is a revolutionary new way to track engine balance across your entire organization! A simple-to-use website provides a single location for your operators and analysts to upload their engine balance results. The MachineryRx website supports automatic uploads from MMS' Snapshot Engine Balancer® along with simple form-entry for non-MMS analyzer users.

**Historical Job Status**

Summary Item	Total	Balanced	Balanced	Avg Hours	Avg Minutes	Percent	Permitted	Total	
Level	Workload	Balance	Early	Balance	% Balance	Left Good	Approved	Power	
Overall	79	300	84%	9.07%	375.5	33.1	65%	25	153,300
	79	290	84.84%	9.077%	376.6 hrs	28.1 min	67.1%	26	143,860

**Recent Balance Jobs**

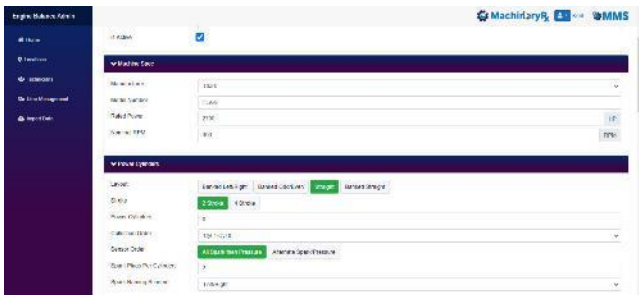
Location	Rated Power	Model Number	Manufacturer	By	Balanced Date	Time To Balance (Minutes)	Ra	As Found Balance	As Left Condition	As Left Balance	As Left Condition
1016	7500	11A.8	DAEW	Ken	Dec 14, 2009	11:54:11	9.0%	Good	7.3%	Good	
1017	2100	TUV-6	DAEW	Ken	Dec 21, 2009	2:00	4.4%	Good	5.1%	Exp	

Home page lists recent balance job for users' area of responsibility (e.g., Corporate, Division, Area, Station)

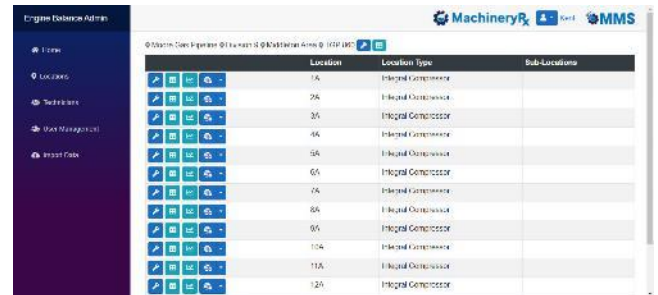
Location	Location Type	Sub-Locations
Flintshire Area	Area	1
Carroll County Area	Area	3
Middleton Area	Area	4
Moravia Area	Area	5
Eastland Area	Area	3
West Monroe	Area	3
East Area	Area	1

Click to drill down through different levels

- Organize balance data by multiple, custom levels (e.g., Corporate, Division, Region, Station, Machine)
- Access levels controlled by log-in permissions by user
- Share information and data across company
- Enhance ability for peer advice/review throughout organization
- No software to install...just web browser and log-in credentials
- Acceptable balance limits and balance intervals customizable at each level (Corporate, Division, Area, Station and Machine)
- Website securely hosted on Microsoft Azure
- Compare engine balance data across entire company by Unit Model Number
- Informative and actionable reports for management. Managers can add recommendations to a particular balance report
- Automatic upload of balance data from MMS Snapshot Engine Balancers including:
  - Power cylinder pressure and ignition curves
  - As-Found and As-Left data
  - Panel Points
  - Operator Comments
- Simple data entry from non-MMS (Legacy) balancers
  - Operator/Analyst logs into MachineryRx website and enters balance data
  - No redundant entry of information
- Customizable security features



Snapshot Balancer setups stored on MachineryRx website



Easy single click navigation through MachineryRx website

